



S·H·E

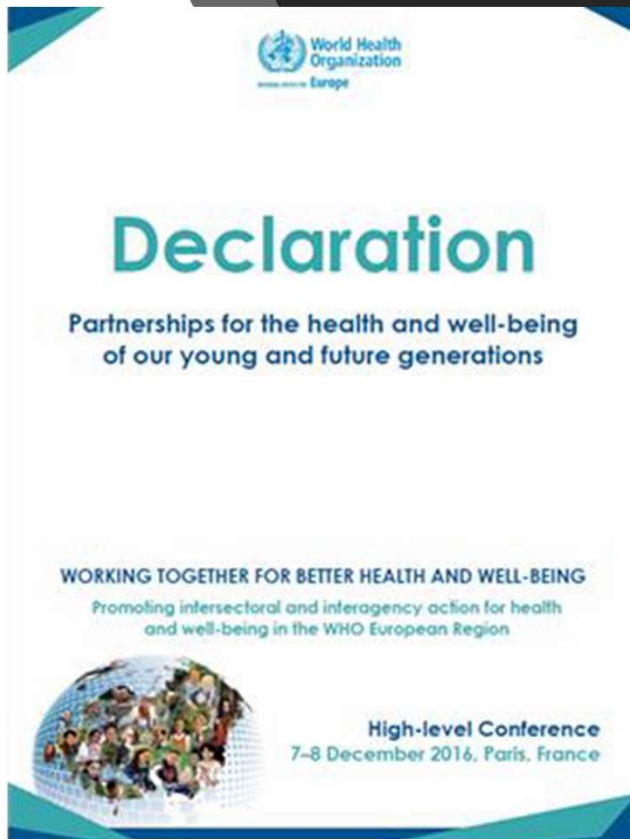
Schools for Health in Europe

# News from SHE

---

SHE Research Group Meeting 2019, Iceland

# Make every school a health promoting school

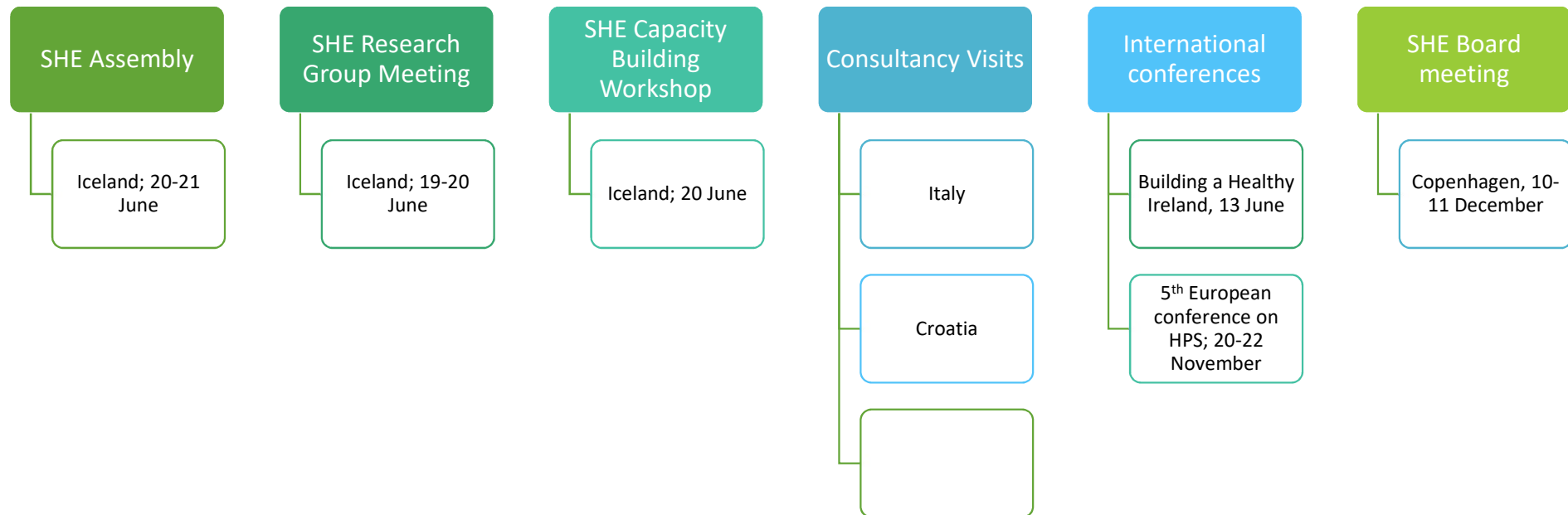


Support and expand the Schools for Health in Europe network, which in this framework would include proposing Europe-wide standards for early childhood development.

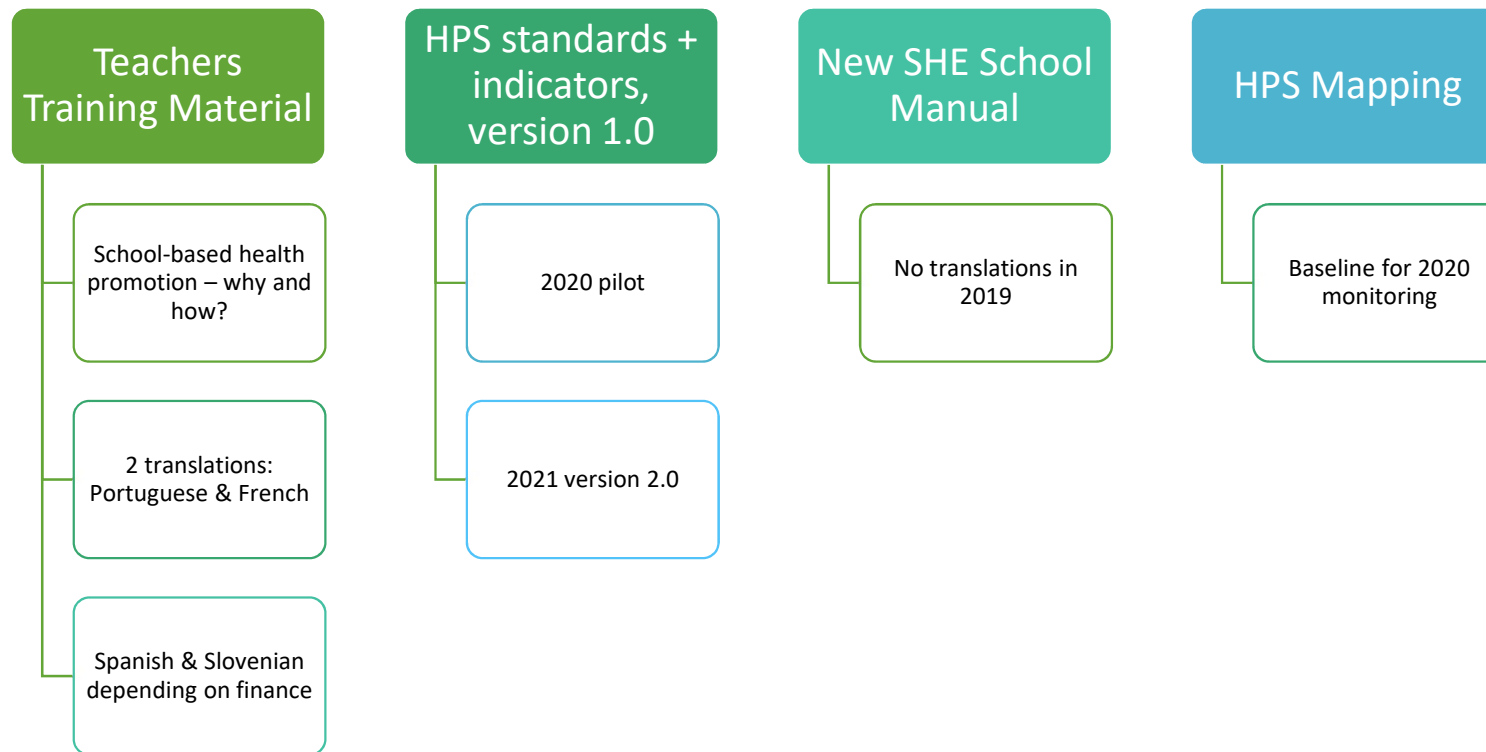
# SHE 2018

- Periodic Online Technical Report approved.
- External evaluator:
  - A crude calculation shows that out of these 14 OOs, 9 were completely fulfilled; another two were fulfilled to a large extent, whereas three were not fulfilled and therefore postponed till 2019.
    - Support one publication
    - SHE teachers material
    - SHE Academy
  - Overall, this is a satisfactory achievement bearing in mind the short time span (6 months). It is the impression that the key players within SHE have made a strong effort to kick-start the activities and move in the right direction.

# SHE work plan 2019



# SHE work plan 2019

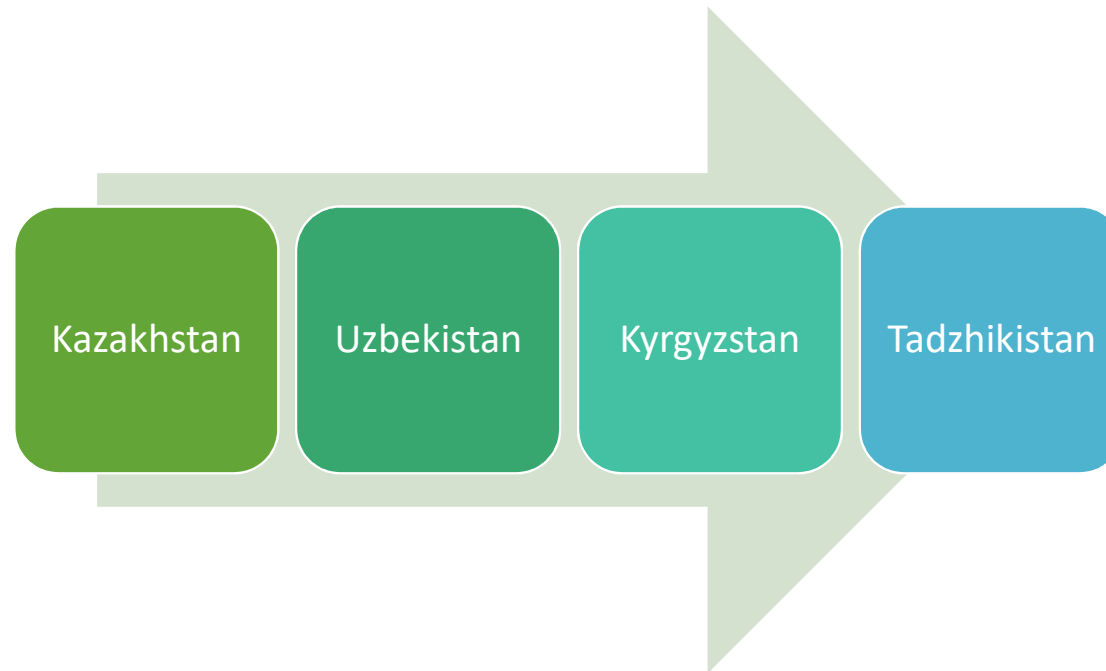


# SHE work plan 2019



# SHE work plan 2019

- Country missions together with WHO and SHE Branch Office in Moscow.



# Projects

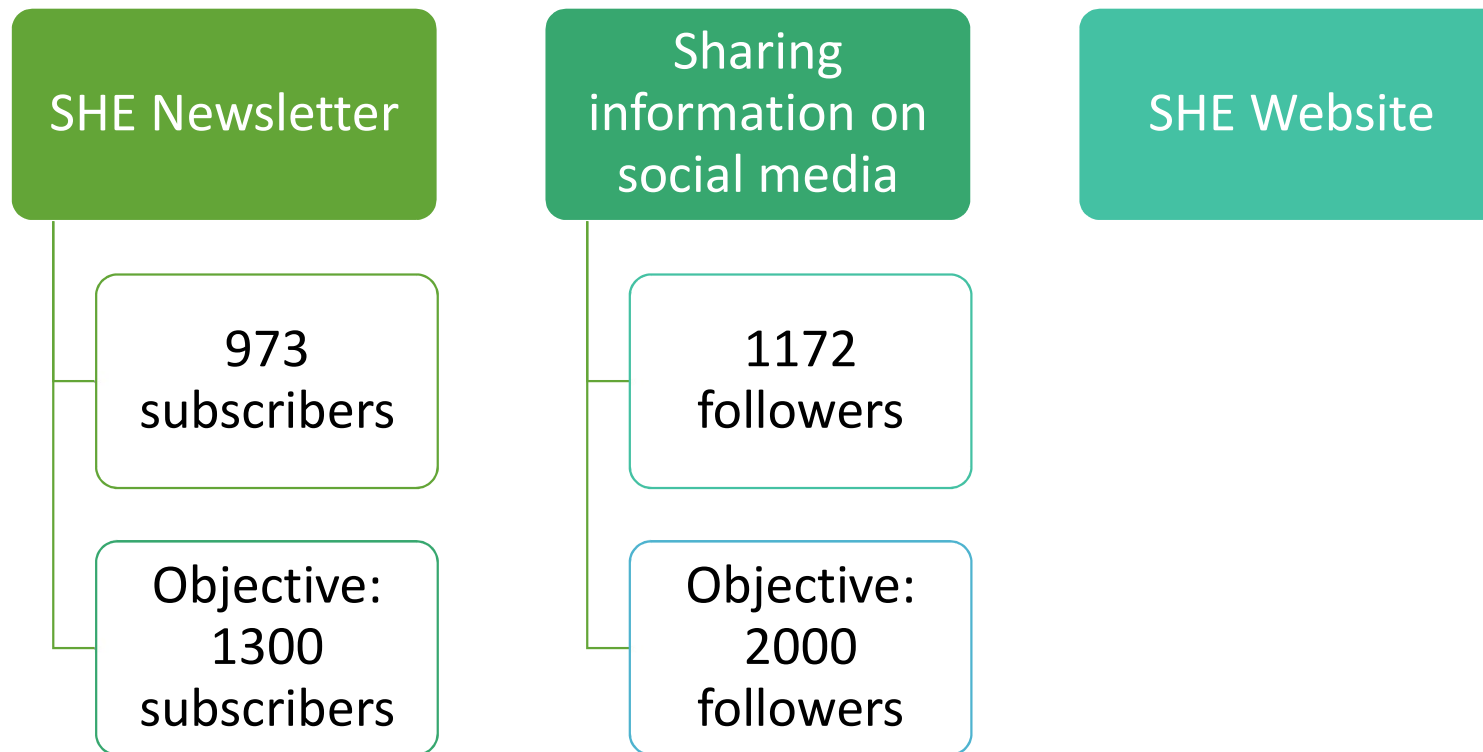
- Using HBSC in school based health promotion.
- SUGAPAS: Supporting Gamified Physical Activities in & out of Schools.
  - Erasmus+
  - Lead: Lietuvos Sporto Universitetas, Lithuania.
- Project Albania: Health promotion and non-communicable disease prevention in schools.
  - Swiss Agency for Development and Cooperation.
  - Lead: GFA Consulting Group.



## Specific objective 3.4

- Coordinating the activities of the SHE Research Group
- Number of project proposals resulting from collaboration among SHE Research Group members: 2

# SHE work plan 2019 (Ulla)





Website

## Navigate About us

Please see the different subjects below to learn more about us.

ORGANISATIONAL STRUCTURE

SHE BOARD

SHE SECRETARIAT

MEMBER COUNTRIES

- JOIN SHE

- SHE ASSEMBLY

- NEWS AND EVENTS FOR COORDINATORS

RESEARCH GROUP

- RESEARCHERS

- NEWS AND EVENTS

- LINKS

- JOIN RESEARCH GROUP

ARTICLES OF ASSOCIATION

# SGA 2020

LOGIN   FUNDING SCHEME   CREATE DRAFT   PARTIES   EDIT PROPOSAL   SUBMIT

## Step 6

### Submit

**HP-SGA-2019**

USER NAME  
Anette SCHULZ

TOPIC  
SGA-01-2019

TYPE OF ACTION  
HP-SGA-OG

ACRONYM  
SHE 2020

FINAL ID | 880944  
DRAFT ID | SEP-210599021

DEADLINE (Brussels Local Time)  
June 2019 17:00:00

6 days left until closure

Check Config !

[Visit our 'How to' user guide](#) ↗

[Visit our 'H2020 Online Manual'](#) ↗

**Your proposal has been successfully submitted**

Your proposal was submitted on: **05 June 2019 at 13:36:45 (Brussels Local Time)** as part of the **HP-SGA-2019** call, before the deadline of **11 June 2019 at 17:00:00 (Brussels Local Time)**.  
Your project ID is **880944**. This number is important and will be used as future reference during the evaluation process.

**Revisit your Proposal**

You may edit your proposal and re-submit at any time before the deadline of **11 June 2019 at 17:00:00 (Brussels Local Time)** by clicking the "re-edit proposal" button.

[re-edit proposal](#)

A digitally signed and time-stamped version of the latest submitted version of your proposal can be viewed/downloaded. Note: this can take from a few seconds to several hours depending upon system load. Please contact the Service Desk if it is not yet available 72 hours after a call closure.

[download](#)

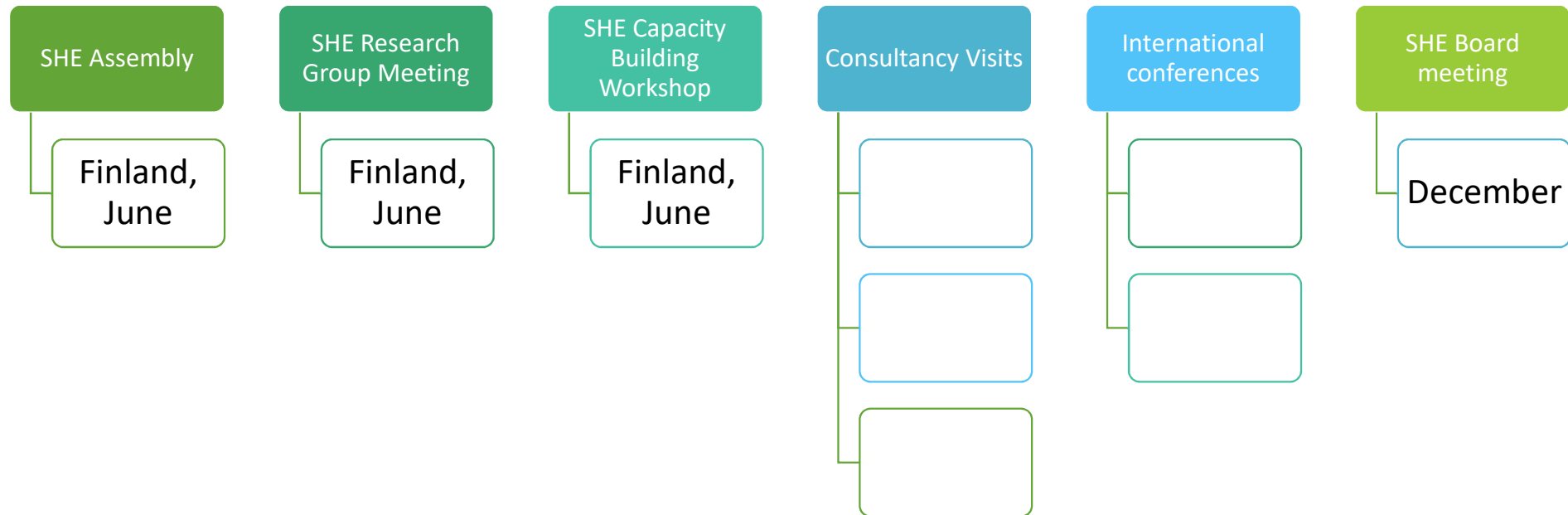
You may withdraw the proposal at any time prior to call closure. In doing so it will not be passed to the evaluation stage.

[withdraw proposal](#)

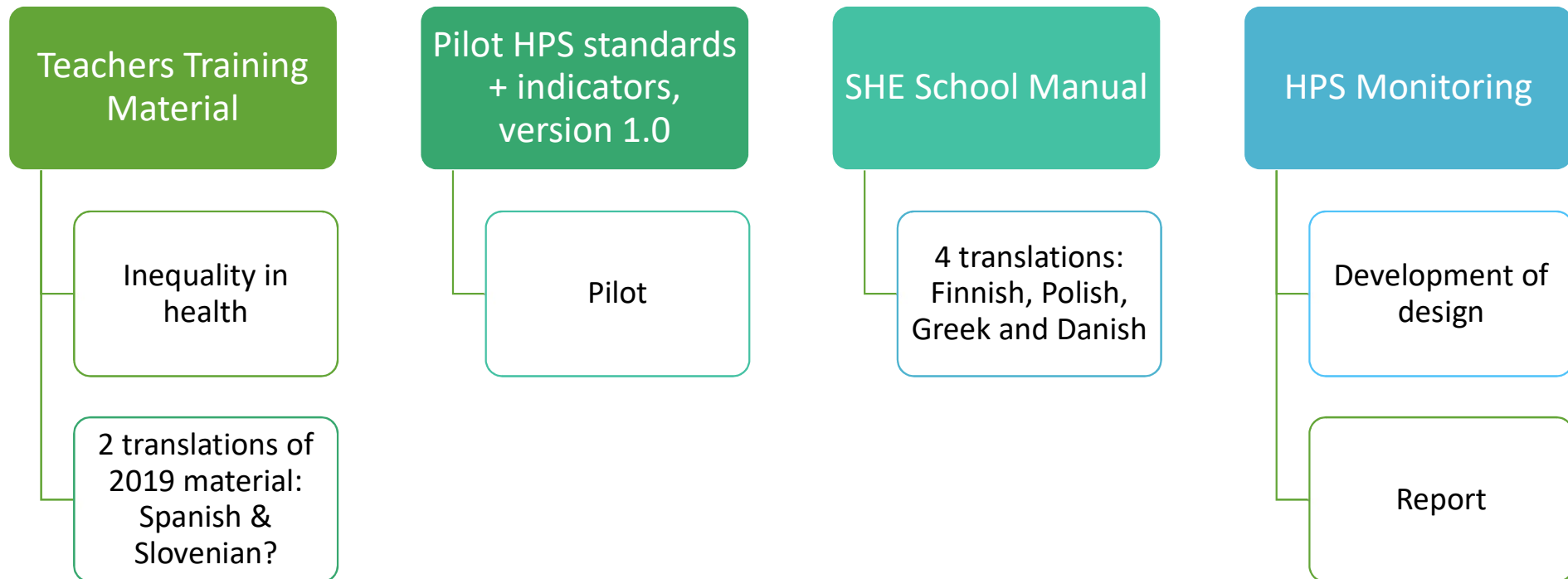
# A VERY busy time

- New employee in the SHE Secretariat: Caroline Moos

# SHE work plan 2020



# SHE work plan 2020



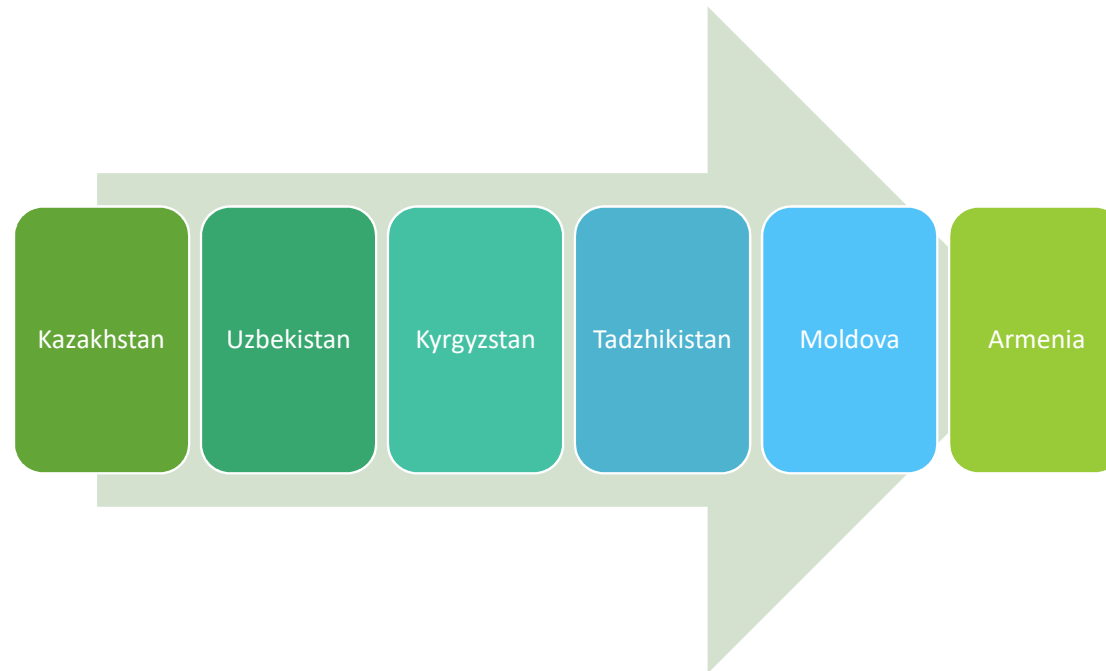
# SHE work plan 2020





# SHE work plan 2020

- Country missions together with WHO and SHE Branch Office in Moscow.





**S · H · E**

**Schools for Health in Europe**

---

**Schools for Health in Europe**

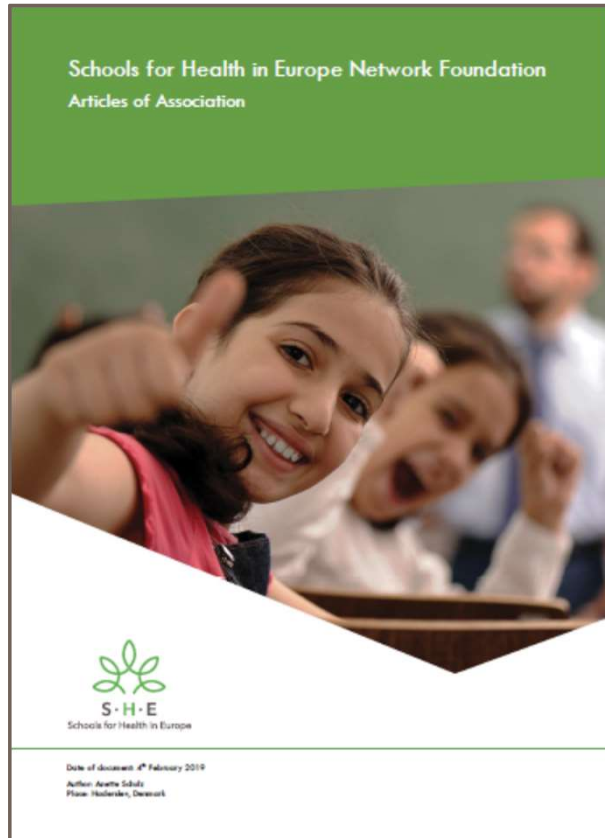
Network Foundation

p/a UC South Denmark

Lembckesvej 7

6100 Haderslev - Denmark

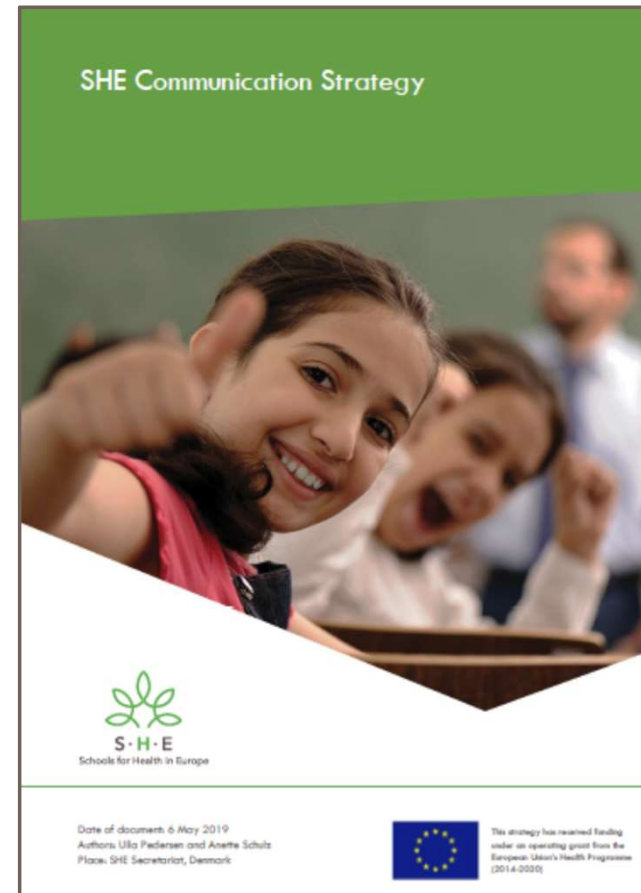
[www.schoolsforhealth.org](http://www.schoolsforhealth.org)



# Articles of Association (AoA)

## § 1. Name

- Schools for Health in Europe Network Foundation (SHE).
- Communication strategy is developed.



## § 4. Schools for Health in Europe Network Foundation membership

- SHE membership is for countries/regions represented by national/regional coordinators
- SHE acknowledges the cultural and administrative differences in countries but recommend that the SHE coordinators – both national and regional – have national/regional support both by the Ministry of Education and the Ministry of Health.
- The national coordinators of SHE plays a central role in the Schools for Health in Europe network foundation. They are the official representatives of the member countries of SHE. More than one national coordinator can be appointed in one country.
- It is possible for a region to be a member of SHE. This will support the further networking and exchange of school health promotion in the country and on a European level. More than one regional coordinator can be appointed in one region.

## 4.5 SHE Research Group

- The SHE Research Group consists of individual researchers with expertise, capacities and interest in (further) developing, exploring and testing/evaluating relevant issues and approaches concerning school health promotion within the European context.
- The SHE Research Group are led by a chairperson and a co-chairperson. The chairperson and co-chairperson are elected at the SHE Research Group Meeting for a 3-year period and approved by the SHE Assembly.
- To avoid change in seats at the same time, the chairperson of the SHE Research Group as a starting point are elected for a 4-year period.
- The chairperson and a co-chairperson are responsible for forming a steering group to support the work in the SHE Research Group.

## § 5. Schools for Health in Europe Network Foundation member's rights

- A national coordinator of SHE has the right to vote during the SHE assembly.
- In absence of a national coordinator, a regional coordinator SHE will be eligible to vote during the SHE assembly as a country representative elected among regional representatives of her/his country (if more regional coordinators exist).

## § 6. Schools for Health in Europe Network Foundation member's obligations

- The overall aim of the SHE Research Group is to further develop, explore and test/evaluate relevant issues and approaches concerning school health promotion within the European context.
- The SHE Research Group tasks and responsibilities will be approved by the SHE Board and specified with annual work plans, starting with 2019.



## § 9. Schools for Health in Europe Network Foundation Board

- The SHE Board is the body in charge of the SHE Network Foundation and supports the SHE secretariat, overseeing the progress and functioning of SHE between assemblies.
- The SHE Board consists of the SHE secretariat (manager/international coordinator), four national/regional SHE representatives and the chairperson of the SHE Research Group.
- The co-chairperson of the SHE Research Group and The World Health Organization Regional Office for Europe has an observer status at SHE board meetings.



**S · H · E**

**Schools for Health in Europe**

---

**Schools for Health in Europe**

Network Foundation

p/a UC South Denmark

Lembckesvej 7

6100 Haderslev - Denmark

[www.schoolsforhealth.org](http://www.schoolsforhealth.org)