



S·H·E

Schools for Health in Europe

SHE Research Group meeting

19-20 June, The University of Iceland

Marjorita Sormunen, Kevin Dadaczynski, Anette Schulz, Jesper von Seelen, Ulla Pedersen

Program for Wednesday

13:00 Welcome and introduction

- ✓ News from the SHE
- ✓ Current issues within the RG
- ✓ Website, newsletter, glossary

13:30 SHE RG documents

- ✓ Articles of Association
- ✓ Plan for 2019 and 2020
- ✓ Position paper

14:30 5th Conference on Health Promoting Schools

15:00 Coffee and tea

15:30 Capacity building workshop

18:00 Closing

19:00/20:00 Dinner (at own expense)

Program for Thursday

9:00 Joint workshop with Assembly participants

Presentations and feedback of the four SHE tasks

- ✓ 9:15-9:45 SHE school manual
- ✓ 9:45-10:15 Teaching materials

Coffee and tea

- ✓ 10:30-11:00 Mapping
- ✓ 11:00-11:30 Standards & indicators
- ✓ Summary and discussion

12:00-13:00 Closing and lunch

News from the SHE

-> Anette

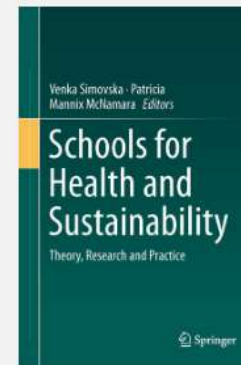
Current issues within the RG

- Members and membership
 - Currently 75 researchers from 21 countries
 - Membership form has been revised
 - Junior membership is under discussion
 - New members here?
- Steering group
 - Karina L, Emily D, Teresa V, Simon M, Venka S, Kevin D, Marjorita S.
 - Tasks of the steering group
- Chairs

Current issues within the RG

- Publications
 - News from Venka
 - Others?
- Joint research applications
 - Rafaela
 - Others?

- HPS Survey (Jesper)



Schools for Health and Sustainability

Theory, Research and Practice

Year	Usage
2018	2580
2017	2886
2016	3033
2015	2721
2014	1012

Since its online publication on Oct 14, 2014, there have been a **total of 12232 chapter downloads** for your eBook on SpringerLink. The table above shows the download figures for the last year(s).

We are also delighted to tell you that your book was among **the top 50% most downloaded eBooks** in its respective eBook Collection in 2018.

Current issues within the RG

- 5th Conference on Health promoting schools (Kevin, in the program)
- SHE Academy (Jesper)



SHE Academy 2019 – Invitation

Do you have an interest in school health promotion? Do you want to know more about Research Methods in School Health Promotion? Then sign up for the SHE Academy 2019 to be held at Lyon University in France.

The SHE Academy is a unique opportunity to critically discuss research methodologies, analytical perspectives and dilemmas from practice in an international learning environment, with input by leading scholars and experts from the field of school-based health promotion and education.

This is the seventh course organized by the Schools for Health in Europe Network Foundation. This year the focus is: Research Methods in School Health Promotion.

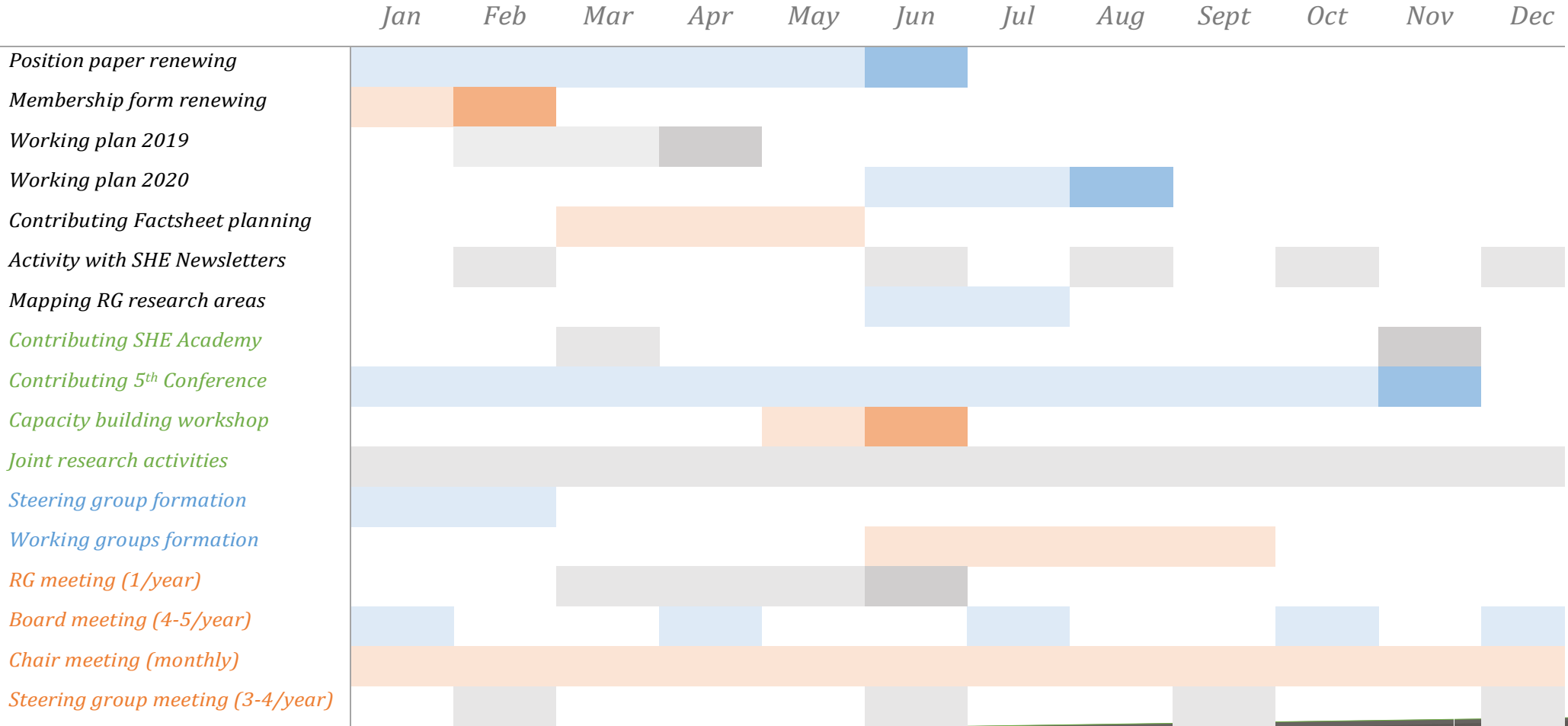
The SHE Academy will be organized in a dynamic and flexible way, to meet the interests and needs of the participants with varied experience, needs and fields of interests. The program will be structured around plenary lectures, dialogue and group sessions for all participants and a range of parallel workshops, for PhD students, researchers and practitioners respectively. PhD students will have an opportunity to present their research work in smaller groups and get focused feedback on selected issues of their choice (e.g. methodology, data generation, data analysis, implications, recommendations). Other participants, researchers and practitioners, will also be able to present their research and / or practice case studies and get feedback.

The SHE Academy is a collaboration between Claude Bernard Lyon 1 University, and SHE in collaboration with University College South Denmark and Unirés.

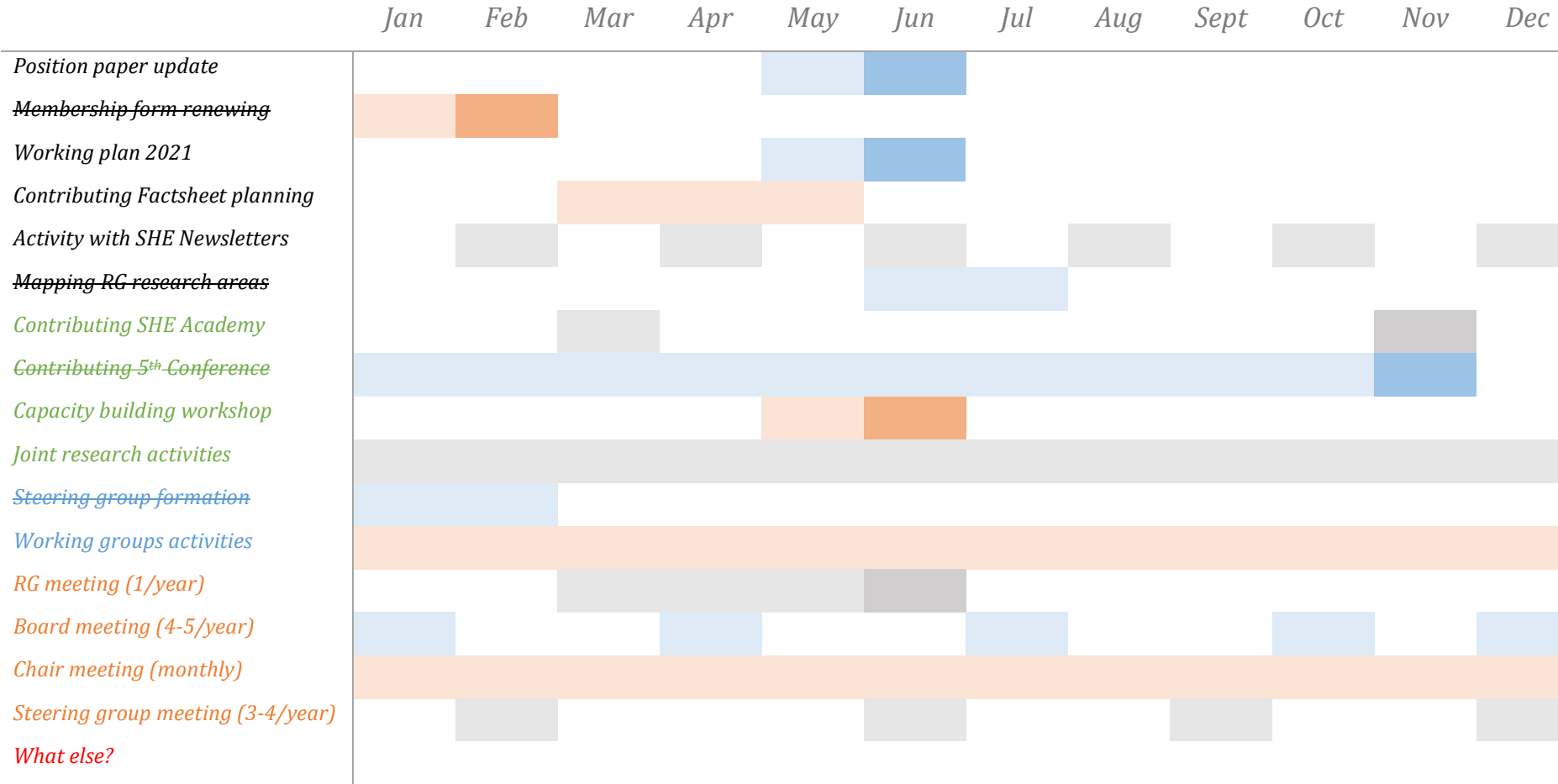
SHE (RG) documents: Articles of Association

-> Anette

SHE (RG) documents: Plan for 2019



SHE (RG) documents: Plan for 2020 (first draft)



SHE (RG) documents: Position paper (work in progress)

Answers to the following questions:

What is the SHE Research Group?

What is the main objective of the SHE RG?

What are the aims of the SHE RG?

How can you join the SHE RG? (membership)

How is the SHE RG organized?

What are the research areas of the SHE RG?

What are the activities / ways of working of the SHE RG?

How is funding, accountability, and coordination done at the SHE RG?

Suggestions from previous RG meeting have been taken in account in the process, for example:

Objectives:

- Ensuring that different types of research are valued
- Both health and education visible

Research issues:

- Several themes were suggested – in renewed position paper a wider perspective has been applied

Ways of working:

- Joint funding applications in smaller groups
- Sharing data
- What is expected from a SHE RG member?
- Activities, such as conferences, keynotes, common PhD-supervision etc.

What are the research areas of SHE RG? (Draft 16.6.2019)

The main overall research area is health education and health promotion in schools, with particular focus on the health-promoting schools approach. Specific emphasis is to support existing research and create research evidence related to the links between education and health and how such links unfold within the school community as a whole.

Additionally, the group's research can aim to link health topics (e.g., nutrition, physical activity, alcohol, smoking, mental health, disabilities etc.) with the whole-school approach to health promotion, focus on health determinants, a socio-ecological view of health, health inequalities, and sustainability in health. Research informing school practices is considered important, as well as participatory research approaches. Varied research methodologies and theoretical frameworks are encouraged. Equal value is given to the diverse theoretical frameworks, methods and epistemological points of views.

The main principles underpinning the research agenda are the SHE core values (equity, sustainability, inclusion, empowerment and action competence, democracy) and SHE pillars (whole school approach to health, participation, school quality, evidence, schools and communities) which will be operationalized in specific research issues.

What are the Activities / ways of working of the SHE RG ? (Draft 16.6.2019)

- form joint working groups for research purposes (projects, funding applications, conducting research reviews, events etc.)
- participate in the capacity building workshops and other planned activities
- participate actively in scientific meetings and other recognized positions representing the SHE approach
- link with other (European and/or international) research groups, study groups (e.g., HBSC) and initiatives
- establish a variety of activities that benefit the RG members, such as: workshops in conferences, researcher (or student) exchange, joint PhD-supervision, sharing data, webinars, learning modules, finding keynotes or lecturers
- disseminate research findings through publications, conferences, and other scientific and public events

5th Conference on Health Promoting Schools



[GENERAL INFORMATION](#) ▾ [PROGRAM & TOPICS](#) ▾ [ABSTRACTS & REGISTRATION](#) ▾ [MOSCOW, HOTELS & TRAVEL](#) ▾ [CONTACTS](#)





S · H · E

Schools for Health in Europe

Schools for Health in Europe

Network Foundation

p/a UC South Denmark

Lembckesvej 7

6100 Haderslev - Denmark

www.schoolsforhealth.org