

**The COVID-HL school principal survey.**

Overview of an international survey and first results from Germany.

Kevin Dadaczynski, Orkan Okan

SHE RG 2021

11 June 2021

**Hochschule Fulda**  
University of Applied Sciences

**COVID-HL Network**  
www.covid-hl.org

**Background**

School staff during COVID-19

**Hochschule Fulda**  
University of Applied Sciences

**EducationWeek**

LEADERSHIP POLICY & POLITICS TEACHING & LEARNING TECHNOLOGY OPINION

TEACHING FROM OUR RESEARCH CENTER

**Teachers Are More Stressed Out Than Ever, Even Amid Promising Developments, Survey Shows**

By Holly Nutter — May 14, 2021 3 min read

2019 teacher high school teacher Jennifer Hester received her COVID-19 vaccine in January in Arlington, Va. (David Chip/Brandt Lister/Corbis via AP)

Educator vaccination rates have increased in the past month and so has district leaders who say they're providing COVID-19 testing. Yet even in promising developments, educator stress levels are on the rise.

These are just some of the results from the latest EdWeek Research Center COVID-19 survey. Administered April 28-30, the nationally representative survey was taken by 1,061 educators, including 449 teachers, 227 school leaders, and 585 district leaders.

**EducationWeek**

LEADERSHIP POLICY & POLITICS TEACHING & LEARNING TECHNOLOGY OPINION

SCHOOL & DISTRICT MANAGEMENT

**A Principal's Battle With COVID-19**

'God Was Willing to Give Me a Few More Years' to 'Fight the Good Fight'

By Catherine Gewertz — June 03, 2021 5 min read

High school principal Chad Russell said he survived a "close-to-death" experience with the COVID-19 virus that last fall hospitalized him from home for weeks, including 10 days in a ventilator. (Loren Buckner for Education Week)

This spring, after a three-month fight with COVID-19, Chad Russell returned to school, pulling an oxygen tank behind him. Russell, the principal of Flower Mound High School in Flower Mound, Texas, recounts his journey, which also included his wife and two of his four children falling ill with the virus. His interview with EdWeek has been edited for length and clarity.

**Los Angeles Times**

Schools face mental health crisis among st trauma remains

Janetta Chaves, a kindergarten and first-grade teacher at UCLA Community School in Kern County, says she is apprehensive about changing the increasingly mental health needs of her students. (Wayne O'Neal for Los Angeles Times)

SHE RG 2021 | Dadaczynski & Okan | 11 June 2021


2


## The COVID-HL Network


Aims of the network

*“The aim is to provide a global perspective including data from university students of countries across the world allowing cross country comparisons with the international data set. We understand this project to be a cooperative and collaborative approach (International COVID-HL Consortium).”*

- Mobilizing colleagues and international researchers with health literacy and health promotion background
- Translation of the questionnaire, the scale documentation and recruitment strategy
- Development of a website: [www.covid-hl.eu](http://www.covid-hl.eu) with a membership area
- Setting up a shared folder for information exchange
- Having regular online meetings with participating researchers



Public Health Zentrum Fulda 



**COVID-HL Consortium**

COVID-19 Health Literacy Survey: University Students (COVID-HL Survey)  
Questionnaire and Scale Documentation

Version 1  
23 March 2020


[covid-hl.eu](http://covid-hl.eu)

SHE RG 2021 | Dadaczynski & Okan | 11 June 2021

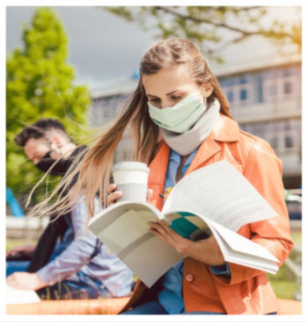
3

## The COVID-HL Network

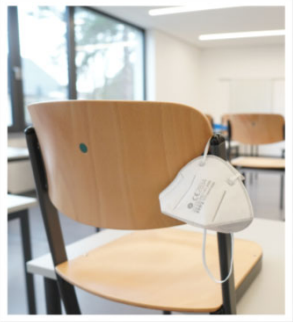
Surveys



**Health promotion and health literacy surveys in the education sector during the COVID-19 pandemic**



**COVID-HL 2020  
University Student Survey**



**COVID-HL 2021  
School Principal Survey**

SHE RG 2021 | Dadaczynski & Okan | 11 June 2021


4

## The COVID-HL Network

Network partners

Hochschule Fulda  
University of Applied Sciences

COVID-HL is a global network and research community, currently consisting of **more than 90 researchers from 45 countries**



Blue countries participate in the COVID-HL Network

SHE RG 2021 | Dadaczynski & Okan | 11 June 2021


5

## COVID-HL school principal survey

Why school principals?

Hochschule Fulda  
University of Applied Sciences

### Why focussing on school principals?



- In their **overall responsibility**, school principals are gate keepers for any school innovation (e.g. HPS) but also for managing crisis (e.g. COVID-19 pandemic)
- Compared to teachers and pupils, school principals, their experienced stress and health situation are **often neglected in school health promotion**
- School leaders have a direct (communication) and indirect (development of working conditions) **influence on teachers' health** and school quality
- School principals are a strong predictor of school quality and hence indirectly influence pupils

Dadaczynski & Palus, 2015; Dadaczynski et al., 2021; Harazd et al., 2009; Leithwood et al., 2017 Liu et al., 2019;

SHE RG 2021 | Dadaczynski & Okan | 11 June 2021

6


## COVID-HL school principal survey


Study design Germany

- Collaboration between Public Health Centre Fulda, Interdisciplinary Centre for Health Literacy Research Bielefeld, Trier University
- Cross-sectional online survey using Unipark
- Non-randomized sample (convenience sample)
- Principals from primary and secondary public schools in Germany
- In partnership with the school principal associations from 4 of 16 federal states
- Duration: 10 March – 2 April 2021
- Approved by the ethics committee of Bielefeld University (EUB 2021-030)


➤

**2186 school principals from 4 German federal states**





www.covid-hl.org




Sehr geehrte Schulleiter, sehr geehrter Schulleiter... (text continues)

SHE RG 2021 | Dadaczynski & Okan | 11 June 2021

7

## COVID-HL school principal survey

Study design & scales



Sociodemographic and schol characteristics

- Sex, age
- Type of school, position, nr of pupils
- Socioeconomic Status
- Digital media infrastructure

Current wok situation

- Perceived stress
- Sense of Coherence
- Self-endangering work behaviour
- Work satisfaction

Health information and health promotion


- Corona-specific health literacy
- Information satisfaction/confusion
- Vaccination readiness & attitudes
- Health promotion & prevention in schools

Health situation

- Perveived health needs pupils & teachers
- Chronic diseases & impairment
- Wellbeing and exhaustion
- Psychosomatic complaints


SHE RG 2021 | Dadaczynski & Okan | 11 June 2021

8

COVID-HL school principal survey		Hochschule Fulda University of Applied Sciences 
Instrument		
Dimension (Nr. Items)	Example	C-Alpha
Health promotion and prevention in schools (15)	...students are supported in dealing with worries and fears caused by the coronavirus.	0.86
Health literacy (22)	...judge if information on coronavirus and the coronavirus epidemic in the media is reliable?	0.95
Health Needs of pupils (8)	...Stress and coping.	0.74
Health needs of teachers (8)	...Stress and coping.	0.74

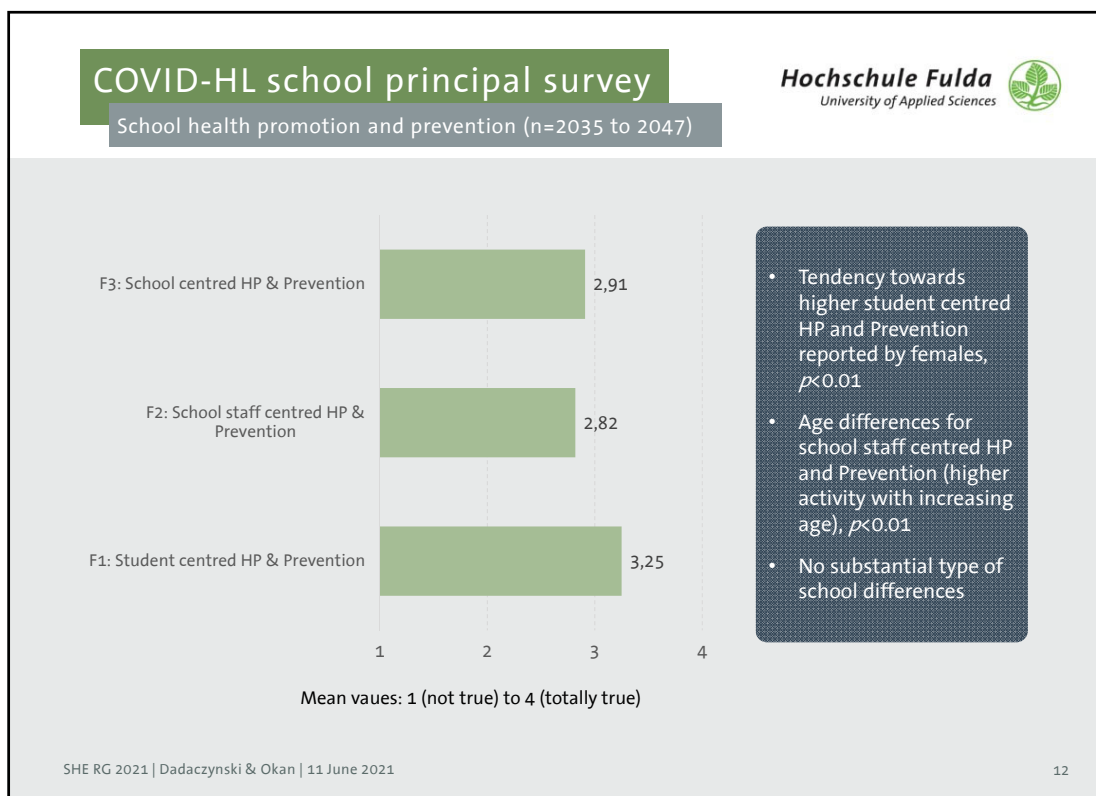
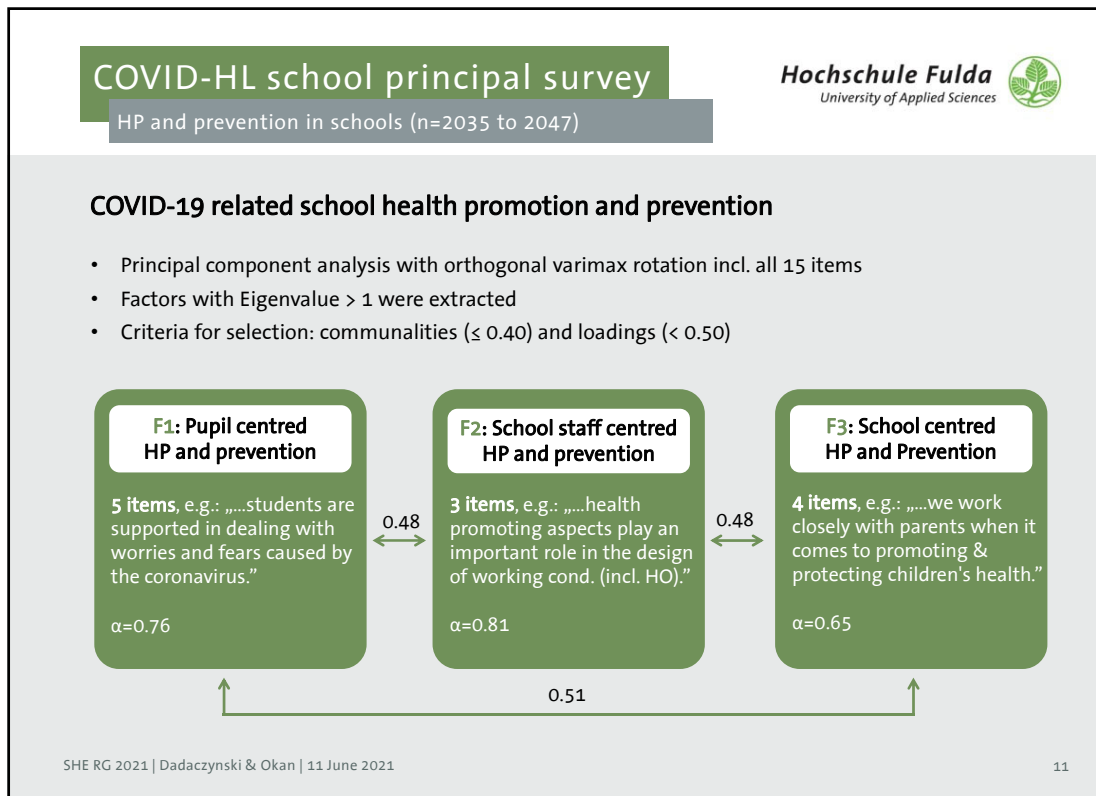
Dadaczynski & Hering, 2021; Dadaczynski, Okan & Messer, 2021; Okan et al., 2020

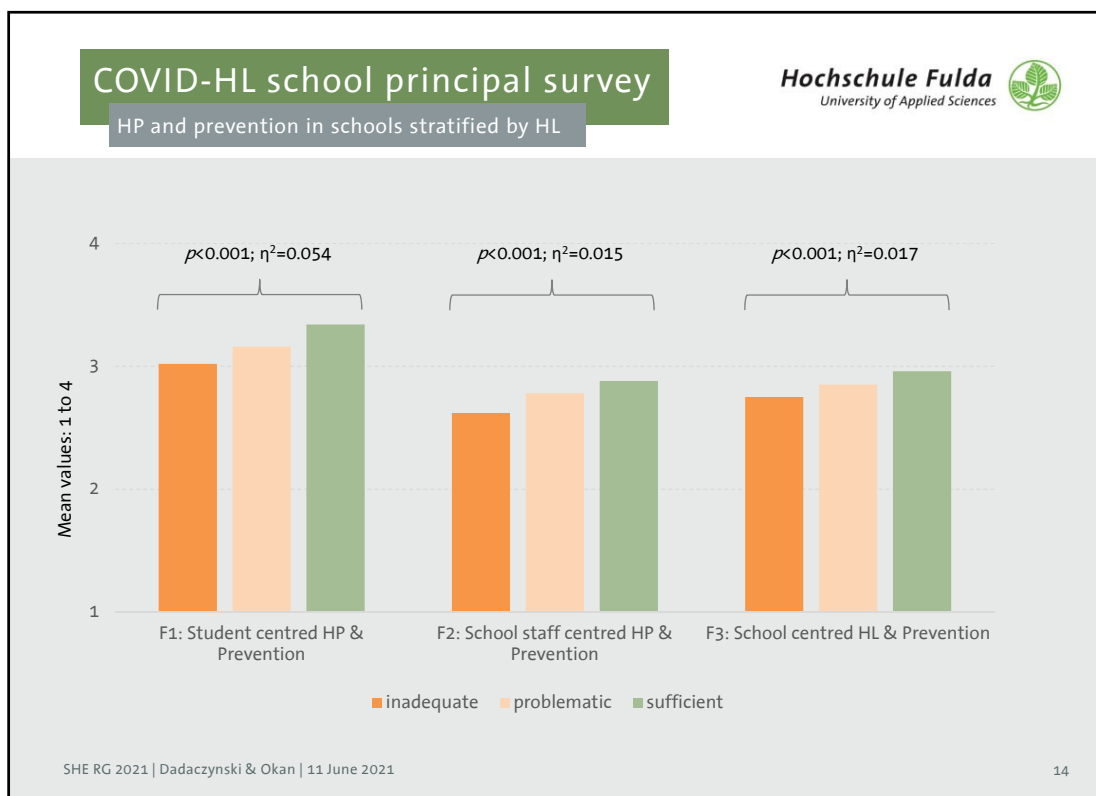
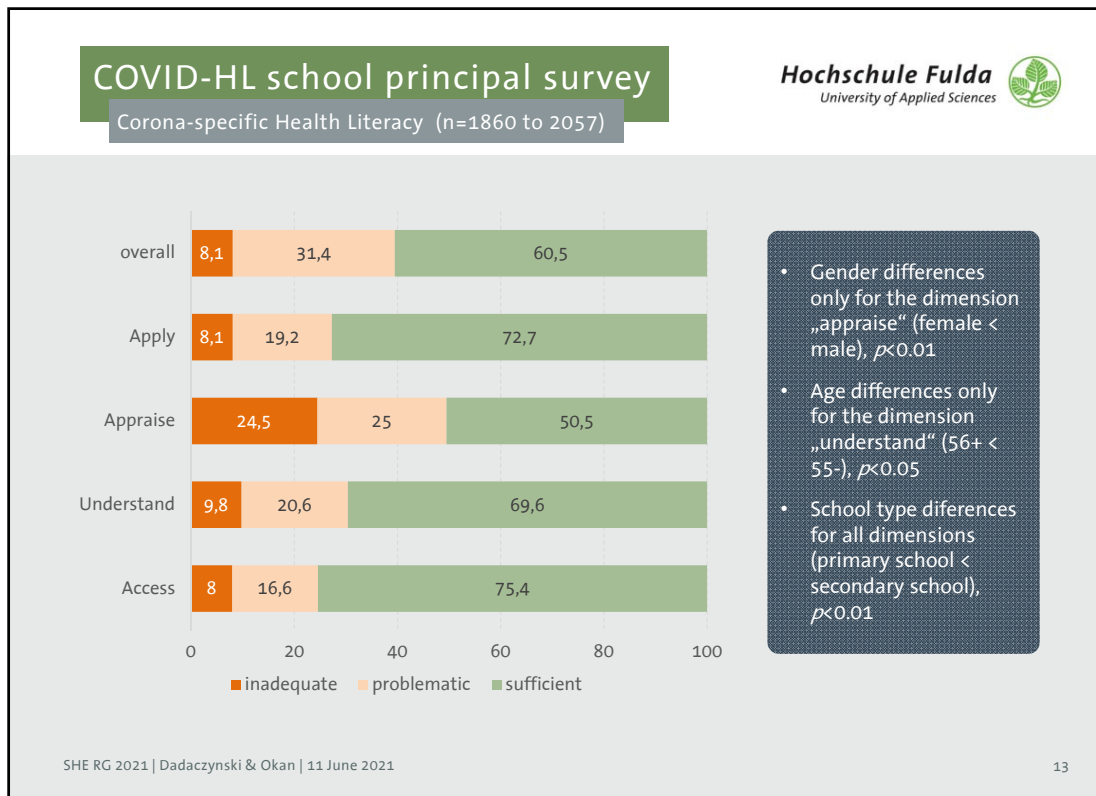
SHE RG 2021 | Dadaczynski & Okan | 11 June 2021 9

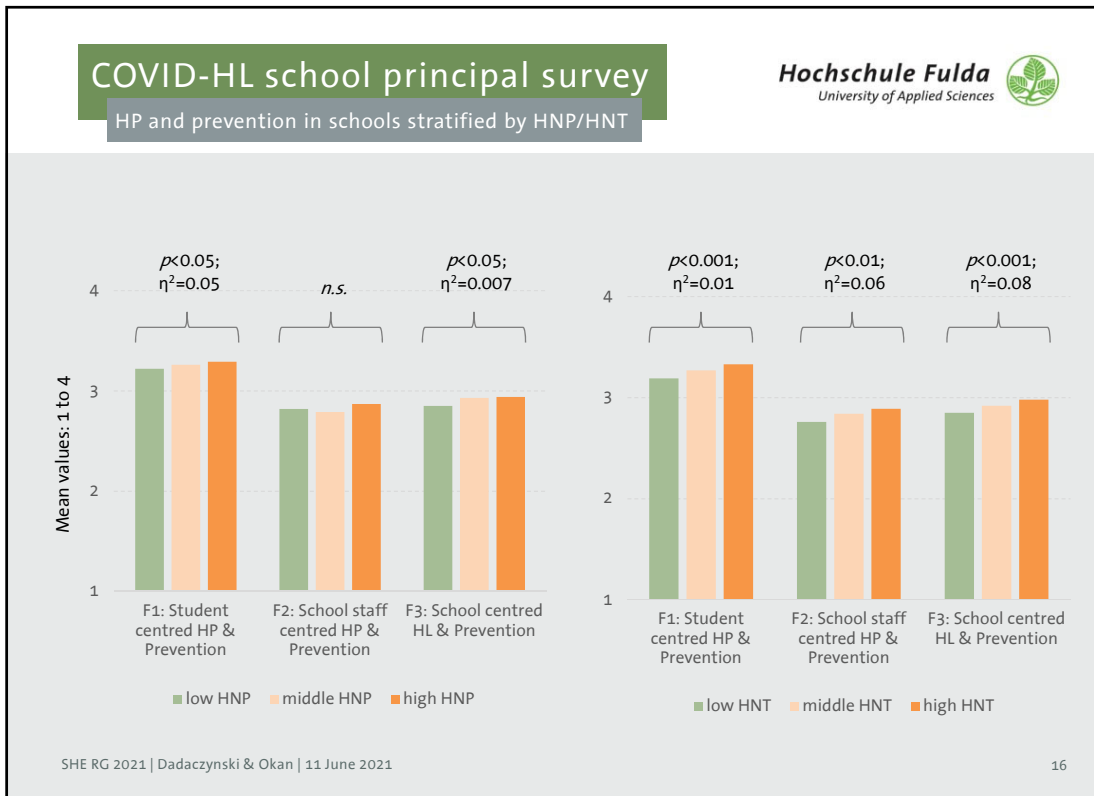
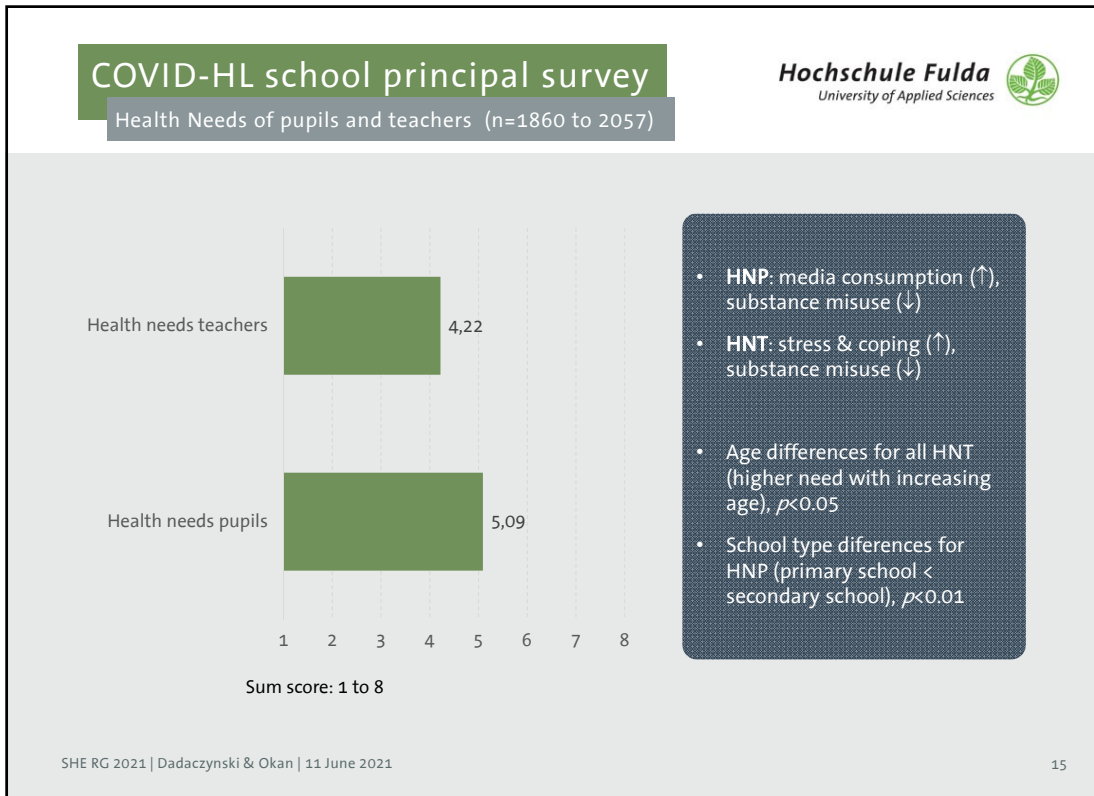
COVID-HL school principal survey		Hochschule Fulda University of Applied Sciences 
Sample characteristics		
	Frequency	Percentage
<b>Gender</b>		
Male	739	33.8%
Female	1446	66.2%
<b>Age</b>		
≤ 45 year	476	21.8%
45 to 50 years	508	23.3%
51 to 55 years	500	22.9%
56 to 60 years	424	19.4%
> 60 years	275	12.6%
<b>Professional Role</b>		
Principal	1833	84.5%
Member of the school management team	336	15.5%
<b>Type of school</b>		
Primary school	1138	53.2%
Secondary school	1003	46.8%
<b>Total</b>	<b>2186</b>	<b>100.0%</b>

SHE RG 2021 | Dadaczynski & Okan | 11 June 2021 10











## Discussion

Conclusions, challenges & future directions

The COVID-HL Network has conducted the **first global survey on health promotion and health literacy in the education sector**, addressing an important target group for all school health activities: school principals

Regarding implementation of school health promotion and prevention activities, **female principals** report higher student centred activities (mean 3,25) and with **increasing age** higher school staff centred activities (mean 2,82) are being reported, but no differences in school types

Overall, **39,5% of German school principals report to have limited corona-specific health literacy** (8,1% inadequate; 31,4% problematic), while 60,5% report to have sufficient levels. Greatest challenges faced: appraising health information (49,5% limited; 50,5% sufficient)

Higher levels of **health literacy in school principals enable (more) implementation of school health promotion and prevention** activities during the COVID-19 pandemic and associated school closures and distant learning

Surprisingly, **HNP and HNT is not associated with HP and prevention in schools.**

## Thank you!

**Fulda University of Applied Science**  
**Public Health Centre Fulda**  
Prof. Dr. Kevin Dadaczynski  
kevin.dadaczynski@pg.hs-fulda.de



**Bielefeld University**  
**Interdisciplinary Centre for Health Literacy Research**  
Dr. Orkan Okan  
orkan.okan@uni-bielefeld.de